

**NOTICE!!**

**These documents have been scanned!**

**Do not place un-scanned documents beneath this notice!**

**Do not remove this notice from this file!**

GPO Jacket No. 560-102  
Print Order 61540  
Rise Business Services, LLC  
Job=AZ15 5/2/2019



Box Number= AZ15016



Claim Begin-End: AMC438482-AMC438487

1 Initial Receipt



AZ15016-12

AMC438349-AMC438982



**United States Department of the Interior**  
**Bureau of Land Management**  
 DIV OF LANDS, MINRLS & ENERGY  
 ONE N CENTRAL AVE  
 PHOENIX, AZ 85004 -4427  
 Phone: 602-417-9200

Receipt

No: 3586850

<b>Transaction #:</b> 3689961	
<b>Date of Transaction:</b> 06/16/2016	
CUSTOMER:	
ZENOLITH USA INC PO BOX 130 ARVADA, CO 80001-0130 US	



LINE #	QTY	DESCRIPTION	REMARKS	UNIT PRICE	TOTAL
1	6.00	LOCATABLE MINERALS / MINING CLAIMS-NEW, UNADJUD, ONE OR MORE AUTH NOS / NEW MINING CLAIMS LOCATION FEE <b>CASES:</b> AMC438482/\$37.00, AMC438483/\$37.00, AMC438484/\$37.00, AMC438485/\$37.00, AMC438486/\$37.00, AMC438487/\$37.00		- n/a -	222.00
2	6.00	LOCATABLE MINERALS / MINING CLAIMS-NEW, UNADJUD, ONE OR MORE AUTH NOS / NEW MINING CLAIMS MAINTENANCE FEE <b>CASES:</b> AMC438482/\$155.00, AMC438483/\$155.00, AMC438484/\$155.00, AMC438485/\$155.00, AMC438486/\$155.00, AMC438487/\$155.00		- n/a -	930.00
3	6.00	LOCATABLE MINERALS / MINING CLAIMS-NEW, UNADJUD, ONE OR MORE AUTH NOS / NEW MINING CLAIM PROCESSING FEE <b>CASES:</b> AMC438482/\$20.00, AMC438483/\$20.00, AMC438484/\$20.00, AMC438485/\$20.00, AMC438486/\$20.00, AMC438487/\$20.00		- n/a -	120.00
<b>TOTAL:</b>					<b>\$1,272.00</b>

PAYMENT INFORMATION			
1	AMOUNT:	1272.00	POSTMARKED: N/A
	TYPE:	CHECK	RECEIVED: 06/16/2016
	CHECK NO:	3684	
	NAME:	GUILINGER, DAVID 340 BEAR CUB DR RIDGWAY CO 81432 US	

**NOTICE!!**

**These documents have been scanned!**

**Do not place un-scanned documents beneath this notice!**

**Do not remove this notice from this file!**

GPO Jacket No. 560-102  
Print Order 61540  
Rise Business Services, LLC  
Job=AZ15 5/2/2019



Box Number= AZ15016



Claim Begin-End: AMC438482-AMC438487

2 Correspondence



AZ15016-12

AMC438349-AMC438982

**NO  
DOCUMENTS  
FOUND**

NO DOCUMENTS FOUND  
NO DOCUMENTS FOUND

**NOTICE!!**

**These documents have been scanned!**

**Do not place un-scanned documents beneath this notice!**

**Do not remove this notice from this file!**

GPO Jacket No. 560-102  
Print Order 61540  
Rise Business Services, LLC  
Job=AZ15 5/2/2019



Box Number= AZ15016



Claim Begin-End: AMC438482-AMC438487

3 Transfers



AZ15016-12

AMC438349-AMC438982

**NO  
DOCUMENTS  
FOUND**

NO DOCUMENTS FOUND  
NO DOCUMENTS FOUND

**NOTICE!!**

**These documents have been scanned!**

**Do not place un-scanned documents beneath this notice!**

**Do not remove this notice from this file!**

GPO Jacket No. 560-102  
Print Order 61540  
Rise Business Services, LLC  
Job=AZ15 5/2/2019



Box Number= AZ15016



Claim Begin-End: AMC438482-AMC438487

4 Annual Filings



AZ15016-12

AMC438349-AMC438982





# WORLD INDUSTRIAL MINERALS

11950 W. 67th Ave • PO Box 130  
Arvada, CO 80001  
720-898-4808

438482

350800

449284

438353

438865

July 31 2018

US Department of the Interior  
Bureau of Land Management  
Division of Land Minerals & Energy  
One Central Ave  
Phoenix, AZ 85004-4427

PHOENIX, ARIZONA

2018 AUG - 1 P 3: 08

RECEIVED  
BLM AZ STATE OFFICE

To Whom it may Concern:

Enclosed is a check totaling \$11,315 (\$155 per claim for 73 total claims) for payment of fees for the assessment year 2018-2019 for the following Midnight Owl, Midnight Owl #2, WP28, RPZ 1, dr, sd, EJ, SLG, Rp and WP claims (full listing attached).

Regards,

  
Jim Guilinger

ENTERED  
AUG 09 2018  
BY: RAM

Zenith Arizona Project Claims

Claim Name	BLM Serial Numbers			County	Fee	Claims Locations		
						Township	Range	Section(s)
dr-1	AMC	438	482	Maricopa	\$155	7N	4W	23
dr-2	AMC	438	483	Maricopa	\$155	7N	4W	23
SD-1	AMC	438	484	Maricopa	\$155	7N	4W	26
SD-2	AMC	438	485	Maricopa	\$155	7N	4W	26
SD-3	AMC	438	486	Maricopa	\$155	7N	4W	26
SD-4	AMC	438	487	Maricopa	\$155	7N	4W	26
Midnight Owl #1	AMC	350	800	Yavapai	\$155	7N	4W	25,26
Midnight Owl #2	AMC	449	284	Yavapai	\$155	8N	2W	30,31,36
RP-1	AMC	438	353	Yavapai	\$155	8N	2W	30,31,36
RP-2	AMC	438	354	Yavapai	\$155	7N	3W	9
RP-3	AMC	438	355	Yavapai	\$155	7N	3W	9
RP-4	AMC	438	356	Yavapai	\$155	7N	3W	9
RP-5	AMC	438	357	Yavapai	\$155	7N	3W	9
RP-6	AMC	438	358	Yavapai	\$155	7N	3W	10
RP-7	AMC	438	359	Yavapai	\$155	7N	3W	10
RP-8	AMC	438	360	Yavapai	\$155	7N	3W	10
RP-9	AMC	438	361	Yavapai	\$155	7N	3W	10
RP-10	AMC	438	362	Yavapai	\$155	7N	3W	10
RP-11	AMC	438	363	Yavapai	\$155	7N	3W	10
RP-12	AMC	438	364	Yavapai	\$155	7N	3W	10
RP-13	AMC	438	365	Yavapai	\$155	7N	3W	10
RP-14	AMC	438	366	Yavapai	\$155	7N	3W	10
RP-15	AMC	438	367	Yavapai	\$155	7N	3W	10
RP-16	AMC	438	368	Yavapai	\$155	7N	3W	10
RP-17	AMC	438	369	Yavapai	\$155	7N	3W	10
RP-18	AMC	438	370	Yavapai	\$155	7N	3W	10
RP-19	AMC	438	371	Yavapai	\$155	7N	3W	10
RP-20	AMC	438	372	Yavapai	\$155	7N	3W	10
RP-21	AMC	438	373	Yavapai	\$155	7N	3W	10
RP-22	AMC	438	374	Yavapai	\$155	7N	3W	10
RP-23	AMC	438	375	Yavapai	\$155	7N	3W	10,11

RECEIVED  
BLM AZ STATE OFFICE  
2018 AUG -7 P 3:08  
PHOENIX, ARIZONA

RP-24	AMC	438	376	7	Yavapai	\$155	7N	3W	10,11
RP-25	AMC	438	377		Yavapai	\$155	7N	3W	10,11
WP-1	AMC	438	378		Yavapai	\$155	8N	3W	35
WP-2	AMC	438	379		Yavapai	\$155	8N	3W	35,36
WP-3	AMC	438	380		Yavapai	\$155	7N/8N	3W	1,2/35,36
WP-4	AMC	438	381		Yavapai	\$155	7N/8N	3W	1,2/36
WP-5	AMC	438	382		Yavapai	\$155	7N/8N	3W	1/36-
WP-6	AMC	438	383		Yavapai	\$155	7N	3W	1
WP-7	AMC	438	384		Yavapai	\$155	7N	3W	1
WP-8	AMC	438	385		Yavapai	\$155	8N	3W	36
WP-9	AMC	438	386		Yavapai	\$155	8N	3W	36
WP-10	AMC	438	387		Yavapai	\$155	8N	3W	36
WP-11	AMC	438	388		Yavapai	\$155	7N/8N	3W	1/36-
WP-12	AMC	438	389		Yavapai	\$155	7N/8N	3W	1/36-
WP-13	AMC	438	390		Yavapai	\$155	8N	3W	36
WP-14	AMC	438	391		Yavapai	\$155	8N	3W	36
WP-15	AMC	438	392		Yavapai	\$155	8N	3W	36
WP-16	AMC	438	393		Yavapai	\$155	8N	3W	36
WP-17	AMC	438	394		Yavapai	\$155	8N	3W	36
WP-18	AMC	438	395		Yavapai	\$155	8N	3W	36
WP-19	AMC	438	396		Yavapai	\$155	8N	3W	36
WP-20	AMC	438	397		Yavapai	\$155	8N	3W	36
WP-21	AMC	438	398		Yavapai	\$155	8N	3W	36
WP-22	AMC	438	399		Yavapai	\$155	8N	3W	36
WP-23	AMC	438	400		Yavapai	\$155	8N	3W	36
WP-24	AMC	438	401		Yavapai	\$155	8N	2W/3W	31/36
WP-25	AMC	438	402		Yavapai	\$155	8N	2W/3W	31/36
WP-26	AMC	438	403		Yavapai	\$155	8N	2W/3W	31/36
WP-27	AMC	438	404		Yavapai	\$155	8N	2W/3W	30/25,36
WP-28	AMC	438	405		Yavapai	\$155	8N	2W/3W	30,31/36
WP-29	AMC	438	406		Yavapai	\$155	8N	2W	30,31
WP-30	AMC	438	407		Yavapai	\$155	8N	2W	31
WP-31	AMC	438	408		Yavapai	\$155	8N	2W	30
WP-32	AMC	438	409	]	Yavapai	\$155	8N	2W	30

RECEIVED  
BLM AZ STATE OFFICE

2018 AUG -7 P 3:08

PHOENIX, ARIZONA

WP-33	AMC	438	410	Yavapai	\$155	8N	2W	30,31
WP-34	AMC	438	411	Yavapai	\$155	8N	2W	29,30
WP-28	AMC	449	286	Yavapai	\$155	8N	2W	30/31/36
RPZ-1	AMC	449	285	Yavapai	\$155	7N	3W	9/16-
EJ-1	AMC	438	865	Yavapai	\$155	7N	3W	11
SLG-1	AMC	438	866	Yavapai	\$155	8N	2W	31
SLG-2	AMC	438	867	Yavapai	\$155	8N	2W	31
SLG-3	AMC	438	868	Yavapai	\$155	8N	2W	31
<b>73 Claims</b>					<b>\$11,315</b>			

RECEIVED  
BLM AZ STATE OFFICE

2018 AUG -7 P 3:08

PHOENIX, ARIZONA



# WORLD INDUSTRIAL MINERALS LLC

PO Box 130

Arvada, CO 80001

720-898-4808 Fax 720-898-4810

DENVER CO 802

04 AUG 2018



BLM  
Div. of Land Minerals & Energy  
One Central Ave  
Phoenix, AZ 85004-4427

PHOENIX, ARIZONA

2018 AUG - 7 P 3: 08

RECEIVED  
BLM AZ STATE OFFICE

85004-442700



**United States Department of the Interior**  
**Bureau of Land Management**  
 DIV OF LANDS, MINRLS & ENERGY  
 ONE N CENTRAL AVE  
 PHOENIX, AZ 85004 -4427  
 Phone: 602-417-9200

Receipt

No:

4229987

<b>Transaction #:</b> 4345266	
<b>Date of Transaction:</b> 08/08/2018	
<b>CUSTOMER:</b>	
WORLD INDUSTRIAL MINERALS LLC PO BOX 130 ARVADA, CO 80001-0130 US	

LINE #	QTY	DESCRIPTION	REMARKS	UNIT PRICE	TOTAL
1	1.00	LOCATABLE MINERALS / MINING CLAIMS-NOT NEW-UNADJUD, ONE AUTH NO. ONLY / MINING CLAIM MONEY RECEIVED CASES: AMC438482/\$11315.00	2019 MAINT/73	- n/a -	11315.00
<b>TOTAL:</b>					<b>\$11,315.00</b>

PAYMENT INFORMATION					
1	AMOUNT:	11315.00	POSTMARKED:	N/A	
	TYPE:	CHECK	RECEIVED:	08/08/2018	
	CHECK NO:	5148			
	NAME:	WORLD INDUSTRIAL MINERALS LLC PO BOX 130 ARVADA CO 80001-0130 US			

REMARKS

This receipt was generated by the automated BLM Collections and Billing System and is a paper representation of a portion of the official electronic record contained therein.



# WORLD INDUSTRIAL MINERALS

11950 W. 67th Ave • PO Box 130  
Arvada, CO 80001  
720-898-4808

438482

350800

438353

438865

July 21 2017

US Dept. of the Interior  
Bureau of land management  
One North Central  
Suite 800  
Phoenix, AZ 85004

2017 JUL 24 P 3:12

To Whom It may Concern:

Enclosed is a check totaling \$10,850 (\$155 per claim for 70 - 20 acre lode claims) for payment of maintenance fees for the assessment year 2017-2018. The claim groups are listed as follows:

- Dr
- SD
- Midnight Owl
- RP
- WP
- EJ
- SLG

(Full listing of BLM serials #'s and locations attached).

Zenith USA - Claimant  
PO Box 130,  
Arvada, CO 80004

Regards,

Jim Guilinger

# 3905805

ENTERED  
JUL 27 2017  
BY: RAM

Zenith Arizona Project Claims

Claim Name	BLM Serial Numbers			County	Fee	Claims Locations		
						Township	Range	Section(s)
dr-1	AMC	438	482	Maricopa	\$155	7N	4W	23
dr-2	AMC	438	483	Maricopa	\$155	7N	4W	23
SD-1	AMC	438	484	Maricopa	\$155	7N	4W	26
SD-2	AMC	438	485	Maricopa	\$155	7N	4W	26
SD-3	AMC	438	486	Maricopa	\$155	7N	4W	26
SD-4	AMC	438	487	Maricopa	\$155	7N	4W	25,26
Midnight Owl #1	AMC	350	800	Yavapai	\$155	8N	2W	30,31,36
RP-1	AMC	438	353	Yavapai	\$155	7N	3W	9
RP-2	AMC	438	354	Yavapai	\$155	7N	3W	9
RP-3	AMC	438	355	Yavapai	\$155	7N	3W	9
RP-4	AMC	438	356	Yavapai	\$155	7N	3W	9
RP-5	AMC	438	357	Yavapai	\$155	7N	3W	10
RP-6	AMC	438	358	Yavapai	\$155	7N	3W	10
RP-7	AMC	438	359	Yavapai	\$155	7N	3W	10
RP-8	AMC	438	360	Yavapai	\$155	7N	3W	10
RP-9	AMC	438	361	Yavapai	\$155	7N	3W	10
RP-10	AMC	438	362	Yavapai	\$155	7N	3W	10
RP-11	AMC	438	363	Yavapai	\$155	7N	3W	10
RP-12	AMC	438	364	Yavapai	\$155	7N	3W	10
RP-13	AMC	438	365	Yavapai	\$155	7N	3W	10
RP-14	AMC	438	366	Yavapai	\$155	7N	3W	10
RP-15	AMC	438	367	Yavapai	\$155	7N	3W	10
RP-16	AMC	438	368	Yavapai	\$155	7N	3W	10
RP-17	AMC	438	369	Yavapai	\$155	7N	3W	10
RP-18	AMC	438	370	Yavapai	\$155	7N	3W	10
RP-19	AMC	438	371	Yavapai	\$155	7N	3W	10
RP-20	AMC	438	372	Yavapai	\$155	7N	3W	10
RP-21	AMC	438	373	Yavapai	\$155	7N	3W	10
RP-22	AMC	438	374	Yavapai	\$155	7N	3W	10,11
RP-23	AMC	438	375	Yavapai	\$155	7N	3W	10,11
RP-24	AMC	438	376	Yavapai	\$155	7N	3W	10,11

RECEIVED  
 2011 JUL 24 P 3:12  
 TUCSON, ARIZONA



RP-25	AMC	438	377	Yavapai	\$155	7N	3W	10,11
WP-1	AMC	438	378	Yavapai	\$155	8N	3W	35
WP-2	AMC	438	379	Yavapai	\$155	8N	3W	35,36
WP-3	AMC	438	380	Yavapai	\$155	7N/8N	3W	1,2/35,36
WP-4	AMC	438	381	Yavapai	\$155	7N/8N	3W	1,2/36
WP-5	AMC	438	382	Yavapai	\$155	7N/8N	3W	1/36-
WP-6	AMC	438	383	Yavapai	\$155	7N	3W	1
WP-7	AMC	438	384	Yavapai	\$155	7N	3W	1
WP-8	AMC	438	385	Yavapai	\$155	8N	3W	36
WP-9	AMC	438	386	Yavapai	\$155	8N	3W	36
WP-10	AMC	438	387	Yavapai	\$155	8N	3W	36
WP-11	AMC	438	388	Yavapai	\$155	7N/8N	3W	1/36-
WP-12	AMC	438	389	Yavapai	\$155	7N/8N	3W	1/36-
WP-13	AMC	438	390	Yavapai	\$155	8N	3W	36
WP-14	AMC	438	391	Yavapai	\$155	8N	3W	36
WP-15	AMC	438	392	Yavapai	\$155	8N	3W	36
WP-16	AMC	438	393	Yavapai	\$155	8N	3W	36
WP-17	AMC	438	394	Yavapai	\$155	8N	3W	36
WP-18	AMC	438	395	Yavapai	\$155	8N	3W	36
WP-19	AMC	438	396	Yavapai	\$155	8N	3W	36
WP-20	AMC	438	397	Yavapai	\$155	8N	3W	36
WP-21	AMC	438	398	Yavapai	\$155	8N	3W	36
WP-22	AMC	438	399	Yavapai	\$155	8N	3W	36
WP-23	AMC	438	400	Yavapai	\$155	8N	3W	36
WP-24	AMC	438	401	Yavapai	\$155	8N	2W/3W	31/36
WP-25	AMC	438	402	Yavapai	\$155	8N	2W/3W	31/36
WP-26	AMC	438	403	Yavapai	\$155	8N	2W/3W	31/36
WP-27	AMC	438	404	Yavapai	\$155	8N	2W/3W	30/25,36
WP-28	AMC	438	405	Yavapai	\$155	8N	2W/3W	30,31/36
WP-29	AMC	438	406	Yavapai	\$155	8N	2W	30,31
WP-30	AMC	438	407	Yavapai	\$155	8N	2W	31
WP-31	AMC	438	408	Yavapai	\$155	8N	2W	30
WP-32	AMC	438	409	Yavapai	\$155	8N	2W	30
WP-33	AMC	438	410	Yavapai	\$155	8N	2W	30,31

TUCSON, ARIZONA

2017 JUL 24 P 3:12

RECEIVED

WP-34	AMC	438	411	Yavapai	\$155	8N	2W	29,30
EJ-1	AMC	438	865	Yavapai	\$155	7N	3W	11
SLG-1	AMC	438	866	Yavapai	\$155	8N	2W	31
SLG-2	AMC	438	867	Yavapai	\$155	8N	2W	31
SLG-3	AMC	438	868	Yavapai	\$155	8N	2W	31
<b>70 Claims</b>					<b>\$10,850</b>			

RECEIVED  
 2017 JUL 24 P 3:12  
 PHOENIX, ARIZONA



# WORLD INDUSTRIAL MINERALS LLC

PO Box 130

Arvada, CO 80001

720-898-4808 Fax 720-898-4810

DENVER CO

21 JUL 2017



US Dept. of Interior  
BLM  
One North Central  
Suite 800  
Phoenix, AZ 85004

PHOENIX, ARIZONA

2017 JUL 24 P 3:12

RECEIVED  
BLM AT STATE OFFICE

85004-442708





**WORLD INDUSTRIAL MINERALS LLC**

PO Box 130  
Arvada, CO 80001  
720-898-4808 Fax 720-898-4810

DENVER CO

21 JUL 2017



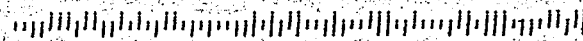
US Dept. of Interior  
BLM  
Ome North Central  
Suite 800  
Phoenix, AZ 85004

PHOENIX, ARIZONA

2017 JUL 24 P 3:12

RECEIVED  
BLM NORTH CENTRAL OFFICE

85004-442708



**United States Department of the Interior**  
**Bureau of Land Management**  
 DIV OF LANDS, MINRLS & ENERGY  
 ONE N CENTRAL AVE  
 PHOENIX, AZ 85004 -4427  
 Phone: 602-417-9200

Receipt

No: 3905805

<b>Transaction #:</b> 4015185	
<b>Date of Transaction:</b> 07/26/2017	
<b>CUSTOMER:</b>	
WORLD INDUSTRIAL MINERALS LLC PO BOX 130 ARVADA, CO 80001-0130 US	

LINE #	QTY	DESCRIPTION	REMARKS	UNIT PRICE	TOTAL
1	1.00	LOCATABLE MINERALS / MINING CLAIMS- NOT NEW-UNADJUD, ONE AUTH NO. ONLY / MINING CLAIM MONEY RECEIVED CASES: AMC438482/\$10850.00	MAINT 2018/70	- n/a -	10850.00
<b>TOTAL:</b>					<b>\$10,850.00</b>

PAYMENT INFORMATION					
1	AMOUNT:	10850.00	POSTMARKED:	07/21/2017	
	TYPE:	CHECK	RECEIVED:	07/24/2017	
	CHECK NO:	4887			
	NAME:	WORLD INDUSTRIAL MINERALS LLC PO BOX 130 ARVADA CO 80001-0130 US			

REMARKS

This receipt was generated by the automated BLM Collections and Billing System and is a paper representation of a portion of the official electronic record contained therein.



# WORLD INDUSTRIAL MINERALS

11950 W. 67th Ave • PO Box 130  
Arvada, CO 80001  
720-898-4808

350800  
438482  
RECEIVED  
BLM AZ STATE OFFICE

2016 AUG 11 P 3:16

PHOENIX, ARIZONA

438353

August 8 2016

US Department of the Interior  
Bureau of Land Management  
Division of Land Minerals & Energy  
One Central Ave  
Phoenix, AZ 85004-4427

To Whom it may Concern:

Enclosed is a check totaling \$10,230 (\$155 per claim for 66 total claims) for payment of fees for the assessment year 2016-2017 for the following Midnight Owl, dr, sd, Rp and WP claims (full listing attached).

Regards,

  
Jim Guilinger

RECEIPT # 3628631

ENTERED  
AUG 11 2016  
BY: RAM

Zenith Assessment Claim Filings

					Fee
AMC	350	800 ←	Midnight Owl	1	\$155
AMC	-438	4827	dr	1	\$155
AMC	-438	483	dr	2	\$155
AMC	-438	484	sd	1	\$155
AMC	-438	485	sd	2	\$155
AMC	-438	486	sd	3	\$155
AMC	-438	4871	sd	4	\$155
AMC	438	3537	RP	1	\$155
AMC	438	354	RP	2	\$155
AMC	438	355	RP	3	\$155
AMC	438	356	RP	4	\$155
AMC	438	357	RP	5	\$155
AMC	438	358	RP	6	\$155
AMC	438	359	RP	7	\$155
AMC	438	360	RP	8	\$155
AMC	438	361	RP	9	\$155
AMC	438	362	RP	10	\$155
AMC	438	363	RP	11	\$155
AMC	438	364	RP	12	\$155
AMC	438	365	RP	13	\$155
AMC	438	366	RP	14	\$155
AMC	438	367	RP	15	\$155
AMC	438	368	RP	16	\$155
AMC	438	369	RP	17	\$155
AMC	438	370	RP	18	\$155
AMC	438	371	RP	19	\$155
AMC	438	372	RP	20	\$155
AMC	438	373	RP	21	\$155
AMC	438	374	RP	22	\$155
AMC	438	375	RP	23	\$155
AMC	438	376	RP	24	\$155
AMC	438	377	RP	25	\$155
AMC	438	378	WP	1	\$155
AMC	438	379	WP	2	\$155
AMC	438	380	WP	3	\$155
AMC	438	381	WP	4	\$155
AMC	438	382	WP	5	\$155
AMC	438	383	WP	6	\$155
AMC	438	384	WP	7	\$155
AMC	438	385	WP	8	\$155
AMC	438	386	WP	9	\$155
AMC	438	387	WP	10	\$155
AMC	438	388	WP	11	\$155
AMC	438	389	WP	12	\$155
AMC	438	390	WP	13	\$155

RECEIVED  
BLM AZ STATE OFFICE  
2016 AUG 11 P 3:16  
PHOENIX, ARIZONA

AMC	438	391 /	WP	14	\$155
AMC	438	392	WP	15	\$155
AMC	438	393	WP	16	\$155
AMC	438	394	WP	17	\$155
AMC	438	395	WP	18	\$155
AMC	438	396	WP	19	\$155
AMC	438	397	WP	20	\$155
AMC	438	398	WP	21	\$155
AMC	438	399	WP	22	\$155
AMC	438	400	WP	23	\$155
AMC	438	401	WP	24	\$155
AMC	438	402	WP	25	\$155
AMC	438	403	WP	26	\$155
AMC	438	404	WP	27	\$155
AMC	438	405	WP	28	\$155
AMC	438	406	WP	29	\$155
AMC	438	407	WP	30	\$155
AMC	438	408	WP	31	\$155
AMC	438	409	WP	32	\$155
AMC	438	410	WP	33	\$155
AMC	438	411 ]	WP	34	\$155

Fee Total

\$10,230 66 claims total

RECEIVED  
BLM AZ STATE OFFICE

2016 AUG 11 P 3 16

PHOENIX, ARIZONA





# WORLD INDUSTRIAL MINERALS LLC

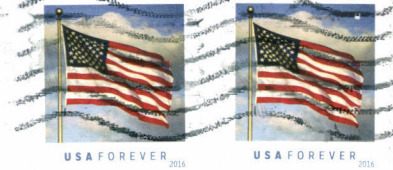
PO Box 130

Arvada, CO 80001

720-898-4808 Fax 720-898-4810

DENVER CO 802

081 AUG 2016 PM 5 L



us Dept. of Interior  
BLM  
Div of Minerals + Energy  
One Central Ave  
Phoenix, AZ 85004-4427

RECEIVED  
BLM AZ STATE OFFICE  
2016 AUG 11 P 3:16  
PHOENIX, ARIZONA

85004-442700

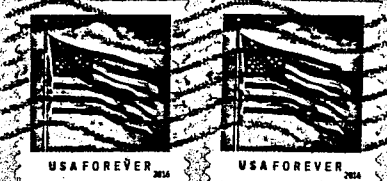




# WORLD INDUSTRIAL MINERALS LLC

PO Box 130  
Arvada, CO 80001  
720-898-4808 Fax 720-898-4810

DENVER CO 802  
89 AUG 2016 PM 5:1



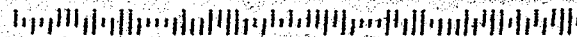
*US Dept. of Interior  
BLM  
Div of Minerals + Energy  
One Central Ave  
Phoenix, AZ 85004-4427*

PHOENIX, ARIZONA

2016 AUG 11 P 3:16

RECEIVED  
BLM AZ STATE OFFICE

85004-442700



**United States Department of the Interior**  
**Bureau of Land Management**  
 DIV OF LANDS, MINRLS & ENERGY  
 ONE N CENTRAL AVE  
 PHOENIX, AZ 85004 -4427  
 Phone: 602-417-9200

Receipt

No: 3628631

<b>Transaction #:</b> 3732397	
<b>Date of Transaction:</b> 08/12/2016	
<b>CUSTOMER:</b>	
WORLD INDUSTRIAL MINERALS LLC 11950 W 67TH AVE ARVADA, CO 80004-2376 US	

LINE #	QTY	DESCRIPTION	REMARKS	UNIT PRICE	TOTAL
1	1.00	LOCATABLE MINERALS / MINING CLAIMS- NOT NEW-UNADJUD, ONE AUTH NO. ONLY / MINING CLAIM MONEY RECEIVED CASES: AMC350800/\$10230.00	MAINT FEE 2017 - 66	- n/a -	10230.00
<b>TOTAL:</b>					<b>\$10,230.00</b>

PAYMENT INFORMATION			
1	AMOUNT:	10230.00	POSTMARKED: 08/08/2016
	TYPE:	CHECK	RECEIVED: 08/11/2016
	CHECK NO:	4643	
	NAME:	WORLD INDUSTRIAL MINERALS LLC PO BOX 130 ARVADA CO 80001 US	

REMARKS

This receipt was generated by the automated BLM Collections and Billing System and is a paper representation of a portion of the official electronic record contained therein.

**NOTICE!!**

**These documents have been scanned!**

**Do not place un-scanned documents beneath this notice!**

**Do not remove this notice from this file!**

GPO Jacket No. 560-102  
Print Order 61540  
Rise Business Services, LLC  
Job=AZ15 5/2/2019



Box Number= AZ15016



Claim Begin-End: AMC438482-AMC438487

5 Miscellaneous



AZ15016-12

AMC438349-AMC438982

**NO  
DOCUMENTS  
FOUND**

NO DOCUMENTS FOUND  
NO DOCUMENTS FOUND

**NOTICE!!**

**These documents have been scanned!**

**Do not place un-scanned documents beneath this notice!**

**Do not remove this notice from this file!**

GPO Jacket No. 560-102  
Print Order 61540  
Rise Business Services, LLC  
Job=AZ15 5/2/2019



Box Number= AZ15016



Claim Begin-End: AMC438482-AMC438487

6 Location Notices-Amendments and Supporting Documents



AZ15016-12

AMC438349-AMC438982

# MINING CLAIM STATUS REPORT

Data Entered: 21 Jun 16

MTP Checked By: EG  
GEO Checked By: EG

LEAD SERIAL NUMBER: AMC 438482 thru AMC 438487

### NUMBER OF CLAIMS & TYPE:

6 LODE  
\_\_\_\_ PLACER  
\_\_\_\_ ASSOCIATION PLACER  
\_\_\_\_ MILL SITE  
\_\_\_\_ TUNNEL SITE

### CHARGES:

Location Fee @ \$37 = \$ 222  
Processing Fee @ \$20 = \$ 120  
Maintenance Fee @ \$155 = \$ 930  
Add'l Maint Fee for Assoc Placer = \$ \_\_\_\_\_  
**SUBTOTAL** \$ \_\_\_\_\_  
Other Fees \$ \_\_\_\_\_  
Other Fees \$ \_\_\_\_\_  
**TOTAL** \$ 1272

TOTAL ACREAGE: \_\_\_\_\_ Per Claim  
(Placer Only)

NUMBER OF LOCATORS: \_\_\_\_\_

DOCUMENTS RECEIVED VIA: Over-the-Counter  Mail  TIMELY FILED: Yes  No

LEGAL DESCRIPTION: T 7N R 4W SEC 23, 26, 25  
T \_\_\_\_\_ R \_\_\_\_\_ SEC \_\_\_\_\_  
T \_\_\_\_\_ R \_\_\_\_\_ SEC \_\_\_\_\_  
T \_\_\_\_\_ R \_\_\_\_\_ SEC \_\_\_\_\_  
T \_\_\_\_\_ R \_\_\_\_\_ SEC \_\_\_\_\_

BLM  FOREST SERVICE  SUBJ TO PL 359: Yes  No   
WILDERNESS AREA

SPLIT ESTATE: N/A  SX  PX  OTHER   
SRHA  Was proper Notice filed if located on SHRA Land? Yes  No

RECONVEYED MINERALS ON BLM LAND REQUIRE OPENING ORDER FROM 1944 TO 1993:  
Open to Entry On \_\_\_\_\_ N/A

COMMENTS/STATUS: VOID  PARTIALLY VOID  PVT MINERALS  WITHDRAWN LANDS   
OTHER  \_\_\_\_\_  
\_\_\_\_\_  
\_\_\_\_\_

ANC438482

Claimant acknowledges that portions of the following claim(s) site(s) may be void or voidable.

Printed Name of Claimant \_\_\_\_\_ Signature of Claimant \_\_\_\_\_

\*\*\*\*\*FINAL ADJUDICATION\*\*\*\*\*

DATE 4/18/2017 INITIALS RM

0506633-2-6-6  
knucklesa

**LOCATION NOTICE FOR LODE MINING CLAIM**  
Maricopa County, State of Arizona

NOTICE IS HEREBY GIVEN that **ZENOLITH (USA) INC**, whose current mailing address is; **P.O. Box 130, ARVADA, COLORADO 80001**, hereby claims under and pursuant to the laws of the State of Arizona and of the laws of the United States of America the following described LODE MINING CLAIM:

The name of this Lode Claim is dr 1.  
This claim was Located, Dated and Posted on the 16th day of June, 2016 by posting a Location Notice on the Location Monument found at, on, or near the South end of the claim.

The length of the claim is 1475 feet in a North direction and 25 feet in the opposing direction from the monument where the Location Notice is posted, and the width is 300 feet on each side of the center of the vein or lode, comprising in all a claim 1500 feet in length and 600 feet in width, and generally following a North and South course.

The exterior boundaries are distinctly marked by six substantial monuments. Each corner, end center, and location monument, consists of a 1-3/4" x 1-3/4" x 5' wooden post with aluminum tags attached, scribed with claim name and corner description. The boundaries can be readily traced by beginning at corner No. 1, the NW corner.

- thence 300 feet East to the North end center, corner No. 2,
- thence 300 feet East to the NE corner, corner No. 3,
- thence 1500 feet South to the SE corner, corner No. 4,
- thence 300 feet West to the South end center, corner No. 5,
- thence 300 feet West to the SW corner, corner No. 6,
- thence 1500 feet North to the NW corner, corner No.1, the point of beginning

The NW corner of this claim, corner No. 1, is found about 2085 feet North and 2015 feet East from the SW corner of Section 23 Township 7 N, Range 4 W, G.&S.R.M.

The Location Monument on which this notice is posted is situated within Section 23, T7N, R4W, G.&S.R.M. and encompasses portions of the following quarter Sections:

SW Quarter, Section 23 Township 7 N Range 4 W Gila & Salt River Meridian.

The boundaries of said claim were defined by law within ninety days from the date of posting of the Notice of Location. The location work, consisting of the making and filing of maps and the payment of fees was completed by the date of recordation of this certificate.

Discoverer, Locator and Claimant:  
**ZENOLITH (USA) Inc.**

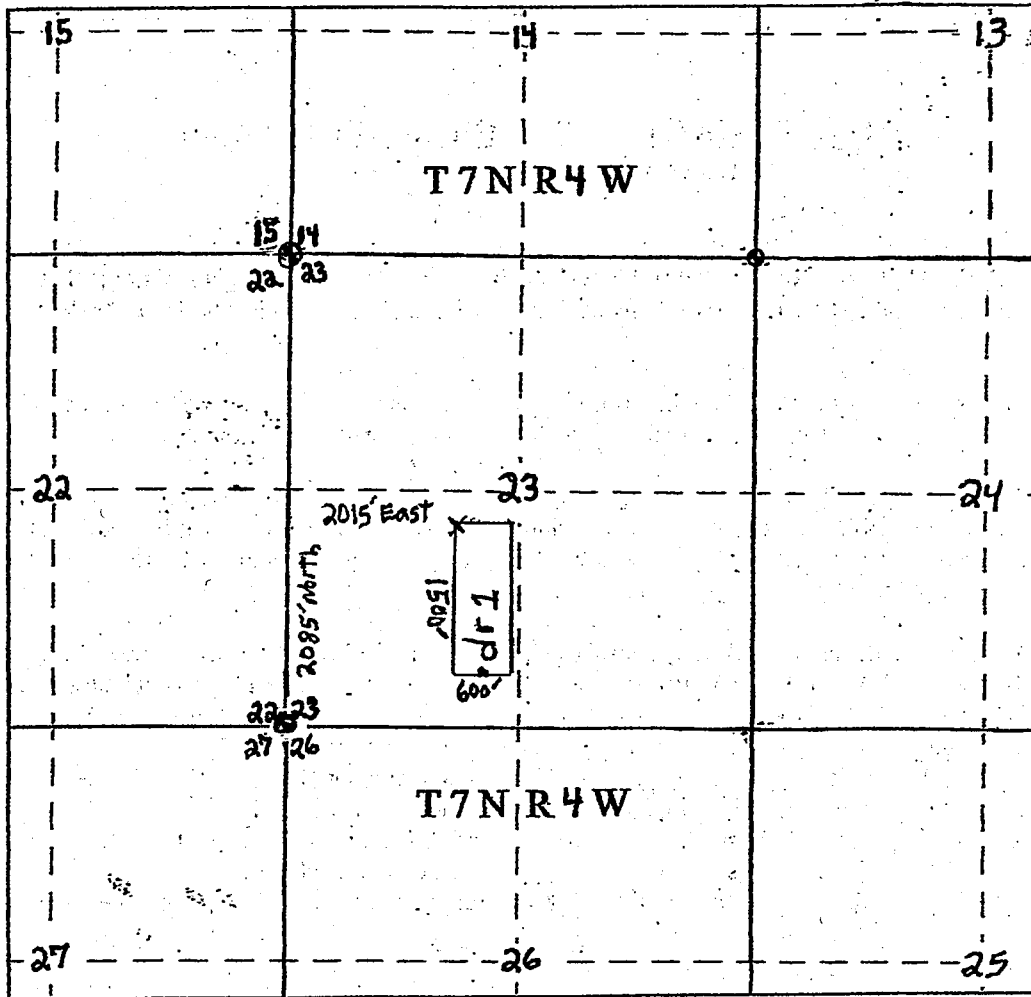
by: David R. Guilinges  
David R. Guilinges as Agent  
340 Bear Cub Drive  
Ridgway, CO 81432

RECEIVED  
BLM AZ STATE OFFICE  
2016 JUN 16 P 2:29  
PHOENIX, ARIZONA

AMC438482



dr 1 LODE CLAIM MAP



Scale: 1"=2000 Feet

1. The above map depicts the **dr 1** Load Claim, which is located in the SW ¼ of Section 23 Township 7 North, Range 4 West, Gila and Salt River Base and Meridian, Maricopa County, Arizona.
2. The **Northwest corner of the claim** is 2085 feet North and 2015 feet East of the Southwest corner of Section 23, Township 7 North, Range 4 West.
3. The type of corner and location monuments used are wood 2" x 2" x 60" posts and metal tags with location information written thereon.

AMC438482

0506633-2-6-5  
knuckl esa

**LOCATION NOTICE FOR LODE MINING CLAIM**  
Maricopa County, State of Arizona

NOTICE IS HEREBY GIVEN that **ZENOLITH (USA) INC**, whose current mailing address is;  
**P.O. Box 130, ARVADA, COLORADO 80001**, hereby claims under and pursuant to the laws of the State of  
Arizona and of the laws of the United States of America the following described LODE MINING CLAIM:

The name of this Lode Claim is dr 2.  
This claim was Located, Dated and Posted on the 16th day of June, 2016 by posting a Location Notice  
on the Location Monument found at, on, or near the South end of the claim.

The length of the claim is 1475 feet in a North direction and 25 feet in the opposing direction from the  
monument where the Location Notice is posted, and the width is 300 feet on each side of the center of the  
vein or lode, comprising in all a claim 1500 feet in length and 600 feet in width, and generally  
following a North and South course.

The exterior boundaries are distinctly marked by six substantial monuments. Each corner, end center, and location  
monument, consists of a 1-3/4" x 1-3/4" x 5' wooden post with aluminum tags attached, scribed with claim name  
and corner description. The boundaries can be readily traced by beginning at corner No. 1, the NW corner.

- thence 300 feet East to the North end center, corner No. 2,
- thence 300 feet East to the NE corner, corner No. 3,
- thence 1500 feet South to the SE corner, corner No. 4,
- thence 300 feet West to the South end center, corner No. 5,
- thence 300 feet West to the SW corner, corner No. 6,
- thence 1500 feet North to the NW corner, corner No.1, the point of beginning

The NW corner of this claim, corner No. 1, is found about 2085 feet North and 2615 feet East  
from the SW corner of Section 23 Township 7 N, Range 4 W, G.&S.R.M.

The Location Monument on which this notice is posted is situated within Section 23, T7N, R4W, G.&S.R.M. and  
encompasses portions of the following quarter Sections:

- SW Quarter, Section 23 Township 7 N Range 4 W Gila & Salt River Meridian.
- SE Quarter, Section 23 Township 7 N Range 4 W Gila & Salt River Meridian.

The boundaries of said claim were defined by law within ninety days from the date of posting of the  
Notice of Location. The location work, consisting of the making and filing of maps and the payment of fees was  
completed by the date of recordation of this certificate.

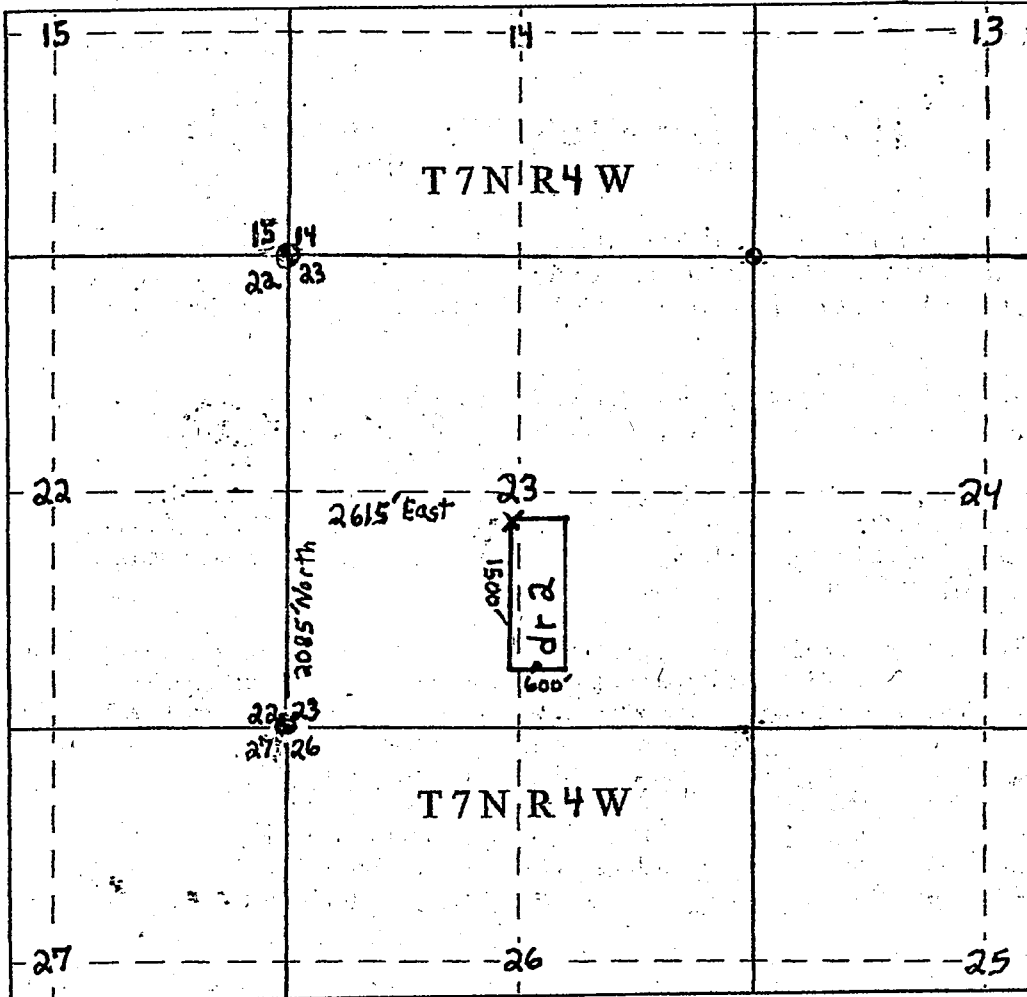
Discoverer, Locator and Claimant:  
**ZENOLITH (USA) Inc.**

by: David R. Guilinger  
David R. Guilinger as Agent  
340 Bear Cub Drive  
Ridgway, CO 81432

RECEIVED  
BLM/AZ STATE OFFICE  
2016 JUN 16 P 2:29  
PHOENIX, ARIZONA

AMC 438483

dr 2 LODE CLAIM MAP



Scale: 1"=2000 Feet

1. The above map depicts the **dr 2** Lode Claim, which is located in the SW  $\frac{1}{4}$  and SE  $\frac{1}{4}$  of Section 23 Township 7 North, Range 4 West, Gila and Salt River Base and Meridian, Maricopa County, Arizona.
2. The **Northwest corner of the claim** is 2085 feet North and 2615 feet East of the Southwest corner of Section 23, Township 7 North, Range 4 West.
3. The type of corner and location monuments used are wood 2" x 2" x 60" posts and metal tags with location information written thereon.

AMC438483

OFFICIAL RECORDS OF  
MARICOPA COUNTY RECORDER  
HELEN PURCELL  
2016-0420566 06/16/16 01:44  
PAPER RECORDING

When recorded mail to:

Name: \_\_\_\_\_

Address: \_\_\_\_\_

City/State/Zip: \_\_\_\_\_

0506633-3-6-4  
knuckl esa

this area reserved for county recorder

CAPTION HEADING:

DO NOT REMOVE

This is part of the official document

AMC438484

PHOENIX, ARIZONA

2016 JUN 16 P 2:29

RECEIVED  
BLM AZ STATE OFFICE

**LOCATION NOTICE FOR LODE MINING CLAIM**

Maricopa County, State of Arizona

NOTICE IS HEREBY GIVEN that **ZENOLITH (USA) INC**, whose current mailing address is; **P.O. Box 130, ARVADA, COLORADO 80001**, hereby claims under and pursuant to the laws of the State of Arizona and of the laws of the United States of America the following described LODE MINING CLAIM:

The name of this Lode Claim is sd 1.

This claim was Located, Dated and Posted on the 16th day of June, 2016 by posting a Location Notice on the Location Monument found at, on, or near the North end of the claim.

The length of the claim is 1475 feet in a South direction and 25 feet in the opposing direction from the monument where the Location Notice is posted, and the width is 300 feet on each side of the center of the vein or lode, comprising in all a claim 1500 feet in length and 600 feet in width, and generally following a North and South course.

The exterior boundaries are distinctly marked by six substantial monuments. Each corner, end center, and location monument, consists of a 1-3/4" x 1-3/4" x 5' wooden post with aluminum tags attached, scribed with claim name and corner description. The boundaries can be readily traced by beginning at corner No. 1, the NW corner.

- thence 300 feet East to the North end center, corner No. 2,
- thence 300 feet East to the NE corner, corner No. 3,
- thence 1500 feet South to the SE corner, corner No. 4,
- thence 300 feet West to the South end center, corner No. 5,
- thence 300 feet West to the SW corner, corner No. 6,
- thence 1500 feet North to the NW corner, corner No.1, the point of beginning

The NW corner of this claim, corner No. 1, is found about 2601 feet South and 2939 feet East from the NW corner of Section 26 Township 7 N, Range 4 W, G.&S.R.M.

The Location Monument on which this notice is posted is situated within Section 26, T7N, R4W, G.&S.R.M. and encompasses portions of the following quarter Sections:

<u>SE</u> Quarter, Section <u>26</u> Township <u>7 N</u> Range <u>4 W</u>	Gila & Salt River Meridian.
<u>NE</u> Quarter, Section <u>26</u> Township <u>7 N</u> Range <u>4 W</u>	Gila & Salt River Meridian.

The boundaries of said claim were defined by law within ninety days from the date of posting of the Notice of Location. The location work, consisting of the making and filing of maps and the payment of fees was completed by the date of recordation of this certificate.

Discoverer, Locator and Claimant:  
**ZENOLITH (USA) Inc.**

by: David R. Guilinger  
David R. Guilinger as Agent  
340 Bear Cub Drive  
Ridgway, CO 81432

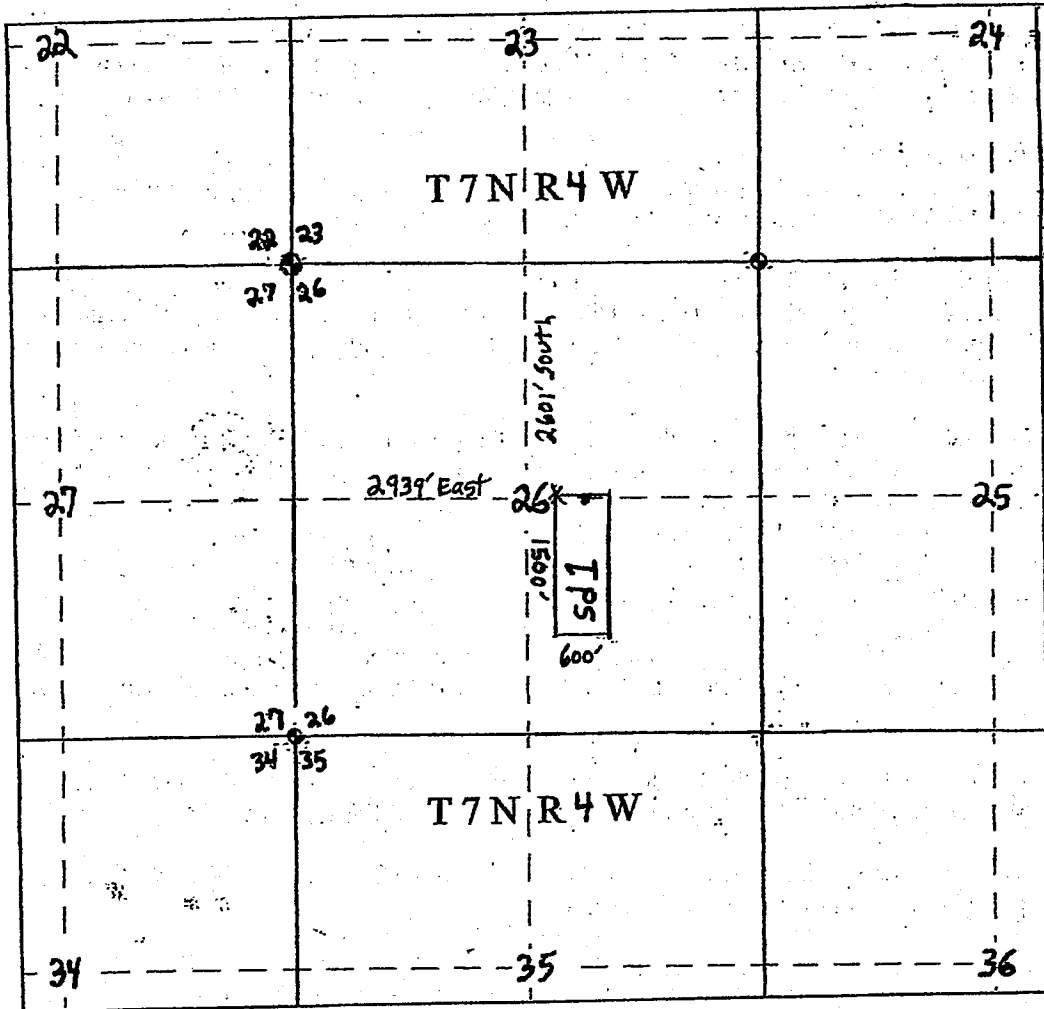
PHOENIX, ARIZONA

2016 JUN 16 P 2:29

RECEIVED  
BIMAZ STATE OFFICE

AMC 438484

sd 1 LODE CLAIM MAP



Scale: 1"=2000 Feet

1. The above map depicts the sd 1 Lode Claim, which is located in the SE ¼ and NE ¼ of Section 26 Township 7 North, Range 4 West, Gila and Salt River Base and Meridian, Maricopa County, Arizona.
2. The Northwest corner of the claim is 2601 feet South and 2939 feet East of the Northwest corner of Section 26, Township 7 North, Range 4 West.
3. The type of corner and location monuments used are wood 2" x 2" x 60" posts and metal tags with location information written thereon.

AMC438484

OFFICIAL RECORDS OF  
MARICOPA COUNTY RECORDER  
HELEN PURCELL  
2016-0420565 06/16/16 01:44  
PAPER RECORDING

When recorded mail to:

Name: \_\_\_\_\_

Address: \_\_\_\_\_

City/State/Zip: \_\_\_\_\_

0506633-3-6-3  
knucklesa

this area reserved for county recorder

CAPTION HEADING:

DO NOT REMOVE

This is part of the official document

ARC438485

PHOENIX, ARIZONA

2016 JUN 16 P 2:29

RECEIVED  
BLM AZ STATE OFFICE

**LOCATION NOTICE FOR LODE MINING CLAIM**

Maricopa County, State of Arizona

NOTICE IS HEREBY GIVEN that ZENOLITH (USA) INC, whose current mailing address is; P.O. Box 130, ARVADA, COLORADO 80001, hereby claims under and pursuant to the laws of the State of Arizona and of the laws of the United States of America the following described LODE MINING CLAIM:

The name of this Lode Claim is sd 2.

This claim was Located, Dated and Posted on the 16th day of June, 2016 by posting a Location Notice on the Location Monument found at, on, or near the North end of the claim.

The length of the claim is 1475 feet in a South direction and 25 feet in the opposing direction from the monument where the Location Notice is posted, and the width is 300 feet on each side of the center of the vein or lode, comprising in all a claim 1500 feet in length and 600 feet in width, and generally following a North and South course.

The exterior boundaries are distinctly marked by six substantial monuments. Each corner, end center, and location monument, consists of a 1-3/4" x 1-3/4" x 5' wooden post with aluminum tags attached, scribed with claim name and corner description. The boundaries can be readily traced by beginning at corner No. 1, the NW corner.

- thence 300 feet East to the North end center, corner No. 2,
- thence 300 feet East to the NE corner, corner No. 3,
- thence 1500 feet South to the SE corner, corner No. 4,
- thence 300 feet West to the South end center, corner No. 5,
- thence 300 feet West to the SW corner, corner No. 6,
- thence 1500 feet North to the NW corner, corner No.1, the point of beginning

The NW corner of this claim, corner No. 1, is found about 2601 feet South and 3539 feet East from the NW corner of Section 26 Township 7 N, Range 4 W, G.&S.R.M.

The Location Monument on which this notice is posted is situated within Section 26, T7N, R4W, G.&S.R.M. and encompasses portions of the following quarter Sections:

- SE Quarter, Section 26 Township 7 N Range 4 W Gila & Salt River Meridian.
- NE Quarter, Section 26 Township 7 N Range 4 W Gila & Salt River Meridian.

The boundaries of said claim were defined by law within ninety days from the date of posting of the Notice of Location. The location work, consisting of the making and filing of maps and the payment of fees was completed by the date of recordation of this certificate.

Discoverer, Locator and Claimant:  
ZENOLITH (USA) Inc.

by: David R. Gulinger  
David R. Gulinger as Agent  
340 Bear Cub Drive  
Ridgway, CO 81432

PHOENIX, ARIZONA

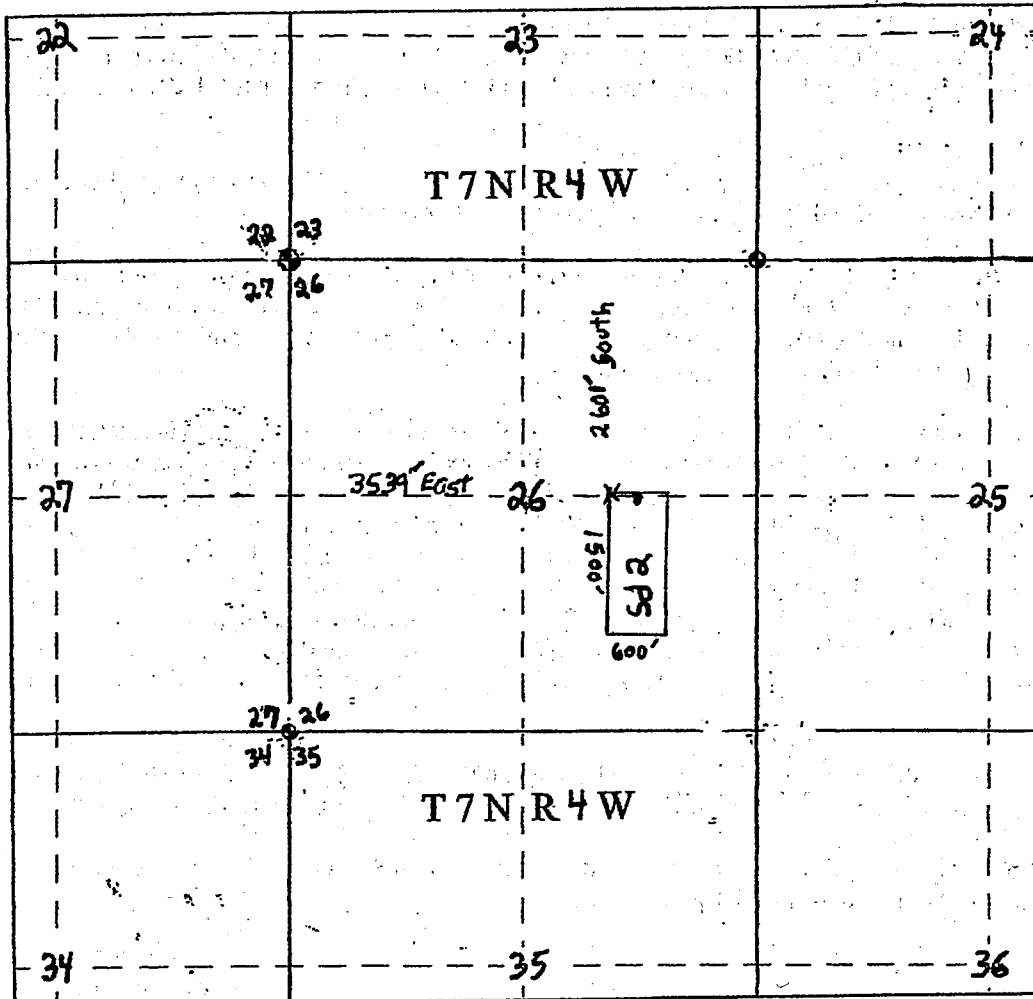
2016 JUN 16 P 2:29

RECEIVED  
BLM AZ STATE OFFICE

AMC438485



sd 2 LODE CLAIM MAP



Scale: 1"=2000 Feet

1. The above map depicts the sd 2 Load Claim, which is located in the SE ¼ and NE ¼ of Section 26 Township 7 North, Range 4 West, Gila and Salt River Base and Meridian, Maricopa County, Arizona.
2. The **Northwest corner of the claim** is 2601 feet South and 3539 feet East of the Northwest corner of Section 26, Township 7 North, Range 4 West.
3. The type of corner and location monuments used are wood 2" x 2" x 60" posts and metal tags with location information written thereon.

AMC438485

When recorded mail to:

Name: \_\_\_\_\_

Address: \_\_\_\_\_

City/State/Zip: \_\_\_\_\_

OFFICIAL RECORDS OF  
MARICOPA COUNTY RECORDER  
HELEN PURCELL  
2016-0420564 06/16/16 01:44  
PAPER RECORDING

0506633-3-6-2  
knuckl esa

this area reserved for county recorder

CAPTION HEADING:

DO NOT REMOVE

This is part of the official document

AMC438486

PHOENIX, ARIZONA

2016 JUN 16 P 2:29

RECEIVED  
BLM AZ STATE OFFICE

**LOCATION NOTICE FOR LODE MINING CLAIM**

Maricopa County, State of Arizona

NOTICE IS HEREBY GIVEN that ZENOLITH (USA) INC, whose current mailing address is; P.O. Box 130, ARVADA, COLORADO 80001, hereby claims under and pursuant to the laws of the State of Arizona and of the laws of the United States of America the following described LODE MINING CLAIM:

The name of this Lode Claim is sd 3.

This claim was Located, Dated and Posted on the 16th day of June, 2016 by posting a Location Notice on the Location Monument found at, on, or near the North end of the claim.

The length of the claim is 1475 feet in a South direction and 25 feet in the opposing direction from the monument where the Location Notice is posted, and the width is 300 feet on each side of the center of the vein or lode, comprising in all a claim 1500 feet in length and 600 feet in width, and generally following a North and South course.

The exterior boundaries are distinctly marked by six substantial monuments. Each corner, end center, and location monument, consists of a 1-3/4" x 1-3/4" x 5' wooden post with aluminum tags attached, scribed with claim name and corner description. The boundaries can be readily traced by beginning at corner No. 1, the NW corner.

- thence 300 feet East to the North end center, corner No. 2,
- thence 300 feet East to the NE corner, corner No. 3,
- thence 1500 feet South to the SE corner, corner No. 4,
- thence 300 feet West to the South end center, corner No. 5,
- thence 300 feet West to the SW corner, corner No. 6,
- thence 1500 feet North to the NW corner, corner No.1, the point of beginning

The NW corner of this claim, corner No. 1, is found about 2601 feet South and 4139 feet East from the NW corner of Section 26 Township 7 N, Range 4 W, G.&S.R.M.

The Location Monument on which this notice is posted is situated within Section 26, T7N, R4W, G.&S.R.M. and encompasses portions of the following quarter Sections:

<u>SE</u> Quarter, Section <u>26</u> Township <u>7 N</u> Range <u>4 W</u>	Gila & Salt River Meridian.
<u>NE</u> Quarter, Section <u>26</u> Township <u>7 N</u> Range <u>4 W</u>	Gila & Salt River Meridian.

The boundaries of said claim were defined by law within ninety days from the date of posting of the Notice of Location. The location work, consisting of the making and filing of maps and the payment of fees was completed by the date of recordation of this certificate.

Discoverer, Locator and Claimant:  
**ZENOLITH (USA) Inc.**

by: David R. Guilinger  
David R. Guilinger as Agent  
340 Bear Cub Drive  
Ridgway, CO 81432

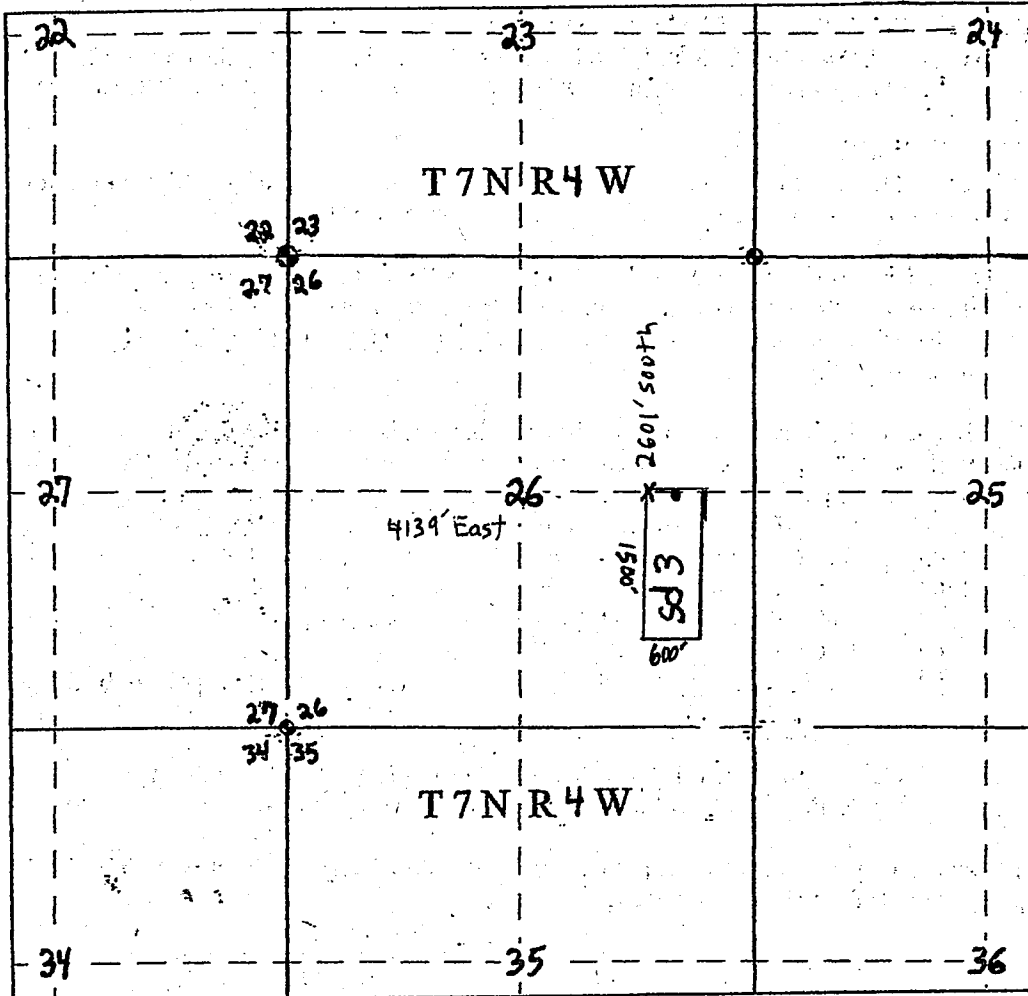
PHOENIX, ARIZONA

2016 JUN 16 P 2:29

RECEIVED  
BLM AZ STATE OFFICE

AMC 438486

sd 3 LODE CLAIM MAP



Scale: 1"=2000 Feet

1. The above map depicts the sd 3 Load Claim, which is located in the SE  $\frac{1}{4}$  and NE  $\frac{1}{4}$  of Section 26 Township 7 North, Range 4 West, Gila and Salt River Base and Meridian, Maricopa County, Arizona.
2. The Northwest corner of the claim is 2601 feet South and 4139 feet East of the Northwest corner of Section 26, Township 7 North, Range 4 West.
3. The type of corner and location monuments used are wood 2" x 2" x 60" posts and metal tags with location information written thereon.

AMC438486

OFFICIAL RECORDS OF  
MARICOPA COUNTY RECORDER  
HELEN PURCELL  
2016-0420563 06/16/16 01:44  
PAPER RECORDING

0506633-3-6-1  
knuckl esa

When recorded mail to:

Name: \_\_\_\_\_

Address: \_\_\_\_\_  
\_\_\_\_\_

City/State/Zip: \_\_\_\_\_  
\_\_\_\_\_

this area reserved for county recorder

CAPTION HEADING:

DO NOT REMOVE

This is part of the official document

PHOENIX, ARIZONA

2016 JUN 16 P 2:29

RECEIVED  
BIMAZ STATE OFFICE

AMC438487

**LOCATION NOTICE FOR LODE MINING CLAIM**

Maricopa County, State of Arizona

NOTICE IS HEREBY GIVEN that ZENOLITH (USA) INC, whose current mailing address is; P.O. Box 130, ARVADA, COLORADO 80001, hereby claims under and pursuant to the laws of the State of Arizona and of the laws of the United States of America the following described LODE MINING CLAIM:

The name of this Lode Claim is sd 4.

This claim was Located, Dated and Posted on the 16th day of June, 2016 by posting a Location Notice on the Location Monument found at, on, or near the North end of the claim.

The length of the claim is 1475 feet in a South direction and 25 feet in the opposing direction from the monument where the Location Notice is posted, and the width is 300 feet on each side of the center of the vein or lode, comprising in all a claim 1500 feet in length and 600 feet in width, and generally following a North and South course.

The exterior boundaries are distinctly marked by six substantial monuments. Each corner, end center, and location monument, consists of a 1-3/4" x 1-3/4" x 5' wooden post with aluminum tags attached, scribed with claim name and corner description. The boundaries can be readily traced by beginning at corner No. 1, the NW corner.

- thence 300 feet East to the North end center, corner No. 2,
- thence 300 feet East to the NE corner, corner No. 3,
- thence 1500 feet South to the SE corner, corner No. 4,
- thence 300 feet West to the South end center, corner No. 5,
- thence 300 feet West to the SW corner, corner No. 6,
- thence 1500 feet North to the NW corner, corner No.1, the point of beginning

The NW corner of this claim, corner No. 1, is found about 2601 feet South and 4739 feet East from the NW corner of Section 26 Township 7 N, Range R 4, G.&S.R.M.

The Location Monument on which this notice is posted is situated within Section 26, T7N, R4W, G.&S.R.M. and encompasses portions of the following quarter Sections:

<u>SE</u> Quarter, Section <u>26</u> Township <u>7 N</u> Range <u>4 W</u>	Gila & Salt River Meridian.
<u>NE</u> Quarter, Section <u>26</u> Township <u>7 N</u> Range <u>4 W</u>	Gila & Salt River Meridian.
<u>SW</u> Quarter, Section <u>25</u> Township <u>7 N</u> Range <u>4 W</u>	Gila & Salt River Meridian.
<u>NW</u> Quarter, Section <u>25</u> Township <u>7 N</u> Range <u>4 W</u>	Gila & Salt River Meridian.

The boundaries of said claim were defined by law within ninety days from the date of posting of the Notice of Location. The location work, consisting of the making and filing of maps and the payment of fees was completed by the date of recordation of this certificate.

Discoverer, Locator and Claimant:  
ZENOLITH (USA) Inc.

by: David R. Guilinger  
David R. Guilinger as Agent  
340 Bear Cub Drive  
Ridgway, CO 81432

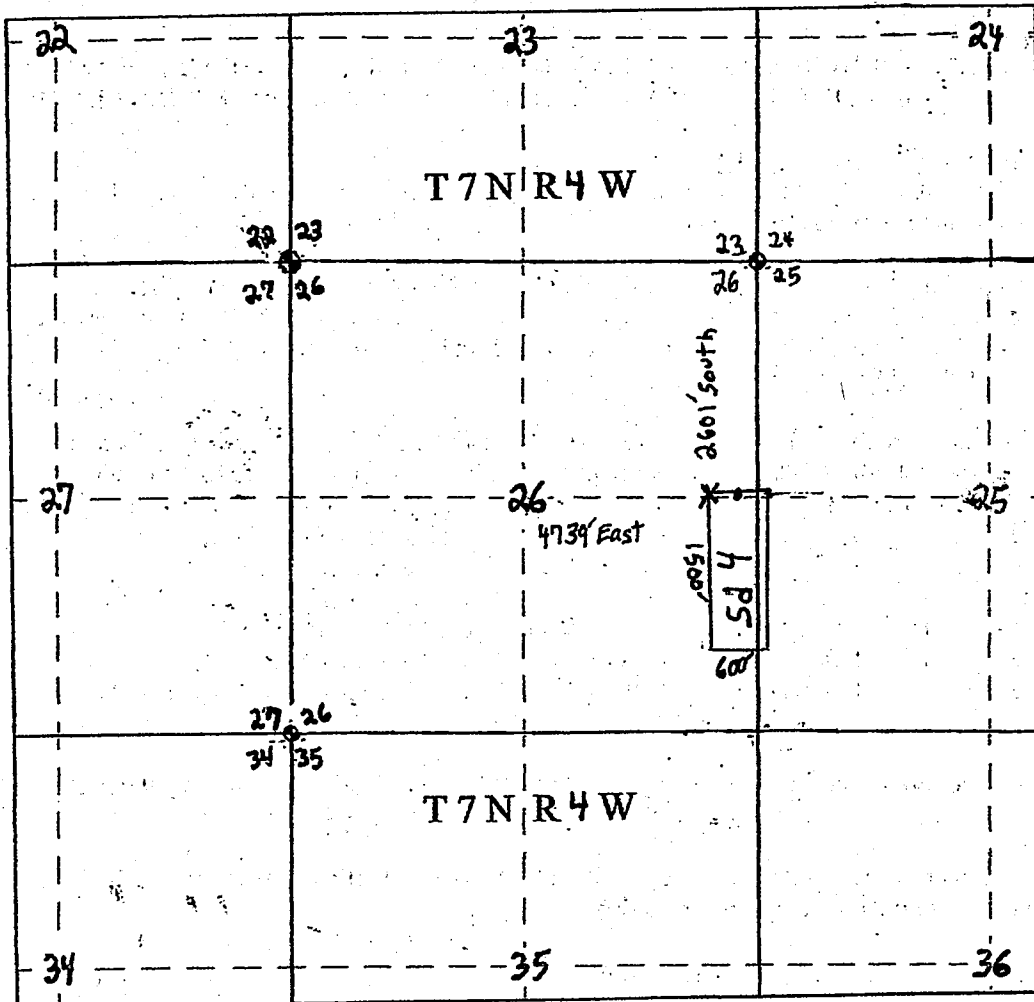
PHOENIX, ARIZONA

2016 JUN 16 P 2:28

RECEIVED  
BLM AZ STATE OFFICE

AHC 438487

sd 4 LODE CLAIM MAP



Scale: 1"=2000 Feet

1. The above map depicts the sd 4 Load Claim, which is located in the SE  $\frac{1}{4}$  and NE  $\frac{1}{4}$  of Section 26 and the SW  $\frac{1}{4}$  and NW  $\frac{1}{4}$  of Section 25 Township 7 North, Range 4 West, Gila and Salt River Base and Meridian, Maricopa County, Arizona.
2. The Northwest corner of the claim is 2601 feet South and 4739 feet East of the Northwest corner of Section 26, Township 7 North, Range 4 West.
3. The type of corner and location monuments used are wood 2" x 2" x 60" posts and metal tags with location information written thereon.

AMC 438487

Input Parameters for Geographic Report with Land

System Id = CR

Admin State = AZ

Geo State =

Casetype Begins With

Case Disp Txt = AUTHORIZED, CANCELLED, EXPIRED, PENDING, REJECTED, RELINQUISHED, WITHDRAWN

Mer Twp Rng =

Section =

Mtrs = 14 0070N 0040W 023, 14 0070N 0040W 025, 14 0070N 0040W 026, 14 0070N 0040W 999

Commodity =

Commodity Txt =

Pending Org =

Pend Org Decode =

Total Rows Returned: 5



RUN TIME: 02:21 PM

Adm State: AZ

UNITED STATES DEPARTMENT OF INTERIOR  
BUREAU OF LAND MANAGEMENT  
GEOGRAPHIC REPORT WITH LAND  
Sorted by Serial Number

RUN DATE: 06/17/2016  
Page 1 of 1

Serial Number: AZA 031568  
Total Case Acres: 1.000

<u>Casetype</u>	<u>Case Disp</u>	14	0070N	0040W	<u>Sect</u>	<u>Sur Typ</u>	<u>Sur Num</u>	<u>Suff</u>	<u>Subdivision</u>	<u>Act Pend</u>
293200	EXPIRED				025	FF			PORTION OF;	
					026	FF			PORTION OF;	

Serial Number: AZA 035151  
Total Case Acres: 1.000

<u>Casetype</u>	<u>Case Disp</u>	14	0070N	0040W	<u>Sect</u>	<u>Sur Typ</u>	<u>Sur Num</u>	<u>Suff</u>	<u>Subdivision</u>	<u>Act Pend</u>
293200	PENDING				025	FF			PORTION OF;	
					026	FF			PORTION OF;	

Serial Number: AZA 035668  
Total Case Acres: 5.000

<u>Casetype</u>	<u>Case Disp</u>	14	0070N	0040W	<u>Sect</u>	<u>Sur Typ</u>	<u>Sur Num</u>	<u>Suff</u>	<u>Subdivision</u>	<u>Act Pend</u>
380913	PENDING				023	ALIQ			SW,SE;	

